



MISGAgram

MARYLAND INTERCLUB SENIORS GOLF ASSOCIATION

NUMBER 9

LEE SHIMBERG, Editor

JANUARY 1982

FROM THE EXECUTIVE DIRECTOR

NEW YEAR'S RESOLUTION: A challenge to the leaders of MISGA so that MISGA continues to be a viable organization -- 1) Capture a charisma or magnetism for Seniors' interest and participation in MISGA programs; 2) Project our objectives into the 1990s; 3) Recognize leadership and club accomplishments; 4) Develop new, fresh programs; 5) Be aware of "soft spots" of disinterest; and 6) continue to provide a meaningful and comprehensive communications program.

MISGA'S REORGANIZATION IS ON TRIAL: Based on our excellent growth we found that a need for change brought us to a need for reorganization. Basically this means that we are testing decentralized direction (administration) of MISGA's operations. The only real change is that we have four semiautonomous Division Directors who are meaningful extensions of the Executive Director and his staff. (See the organization chart elsewhere in this issue. On the reverse side of this detachable page is a list of club reps.)

DIVISION DIRECTORS: Club representatives in each division have elected their directors knowing that they become members of the Board of Directors. Our new directors not only have an interest in Seniors' golf, but have a visional philosophy to meet changing conditions. All have extensive administrative backgrounds in country club and business management. They are willing workers, will attend called meetings, and be available for ad hoc committee assignments. They can be depended upon to prove the merits of reorganization. Only the future will tell us if they are unselfish in their devotion to MISGA's objectives, resourceful innovators, problem solvers, and men with leadership talents.

MY CHRISTMAS MESSAGE TO ALL OF YOU: It is that mystical time of year of again. Pause to contemplate our observance of Christmas and the sweetness and wonder of the Bethlehem Story. We wish you and yours a year of great expectations, hope, and happiness.

Alvin T. Hagen

Reciprocity #2. We visit Elks CC.

In the June MISGAgram issue, we discussed the matter of reciprocity and said that we intended to explore this with a visit to two Eastern Shore clubs. Unfortunately, our schedule made it impossible to work in two back-to-back Senior's Days during either August or September so we chose to ask the Elks Associates to have us on their mixer with Shawnee on 8/20.

Bill Long, the Elks' club rep, assured us that they would be glad to have us and demonstrated that by his warm welcome, which included putting us in his foursome

along with Lou Pikus, club rep from Shawnee. By the way, "we" is John Wheeler and me, Ass't Editor and Editor of the MISGAgram respectively. We are also your roving nonpros dedicated to bringing you MISGA news and to visiting MISGA clubs to find out first hand Associates' views and desires about MISGA events.

We stopped at Easton on our first day and played at Hog Neck Golf Course, a well-maintained public course with lightning-fast greens. After our near sensational round (very few triple bogies), we proceeded to Salisbury, checked into our motel, then had a delicious seafood dinner at a highly recommended restaurant --The Shanty Inn.

The next day we checked into Elks along with 64 other golfers, a large enough turnout to use all the carts. Elks (at least then) has relatively slow greens, so we had to adjust from speedy to "hit 'em greens." This is just one of many MISGA benefits, having to adjust to many varied situations. Despite this difficulty, we managed to help our team to a first-place finish. The pro, Scott Beach, was very warm in his welcome and in his invitation to visit them again. We also had an extra: one of the members had freshly picked crab meat, at very nice prices. John and I each took home a pound to round out a very pleasant tour.

We plan to include symbols on the 1982 mixer schedules --when they become available-- to indicate "degrees" of reciprocity offered by each club. Such reciprocity varies from full to limited, either to senior mixers (rather than senior days) or by capacity (carts), to no reciprocity at all.

DID YOU KNOW THAT--

The following Associates performed heroic golf feats during the '80-'81 season:

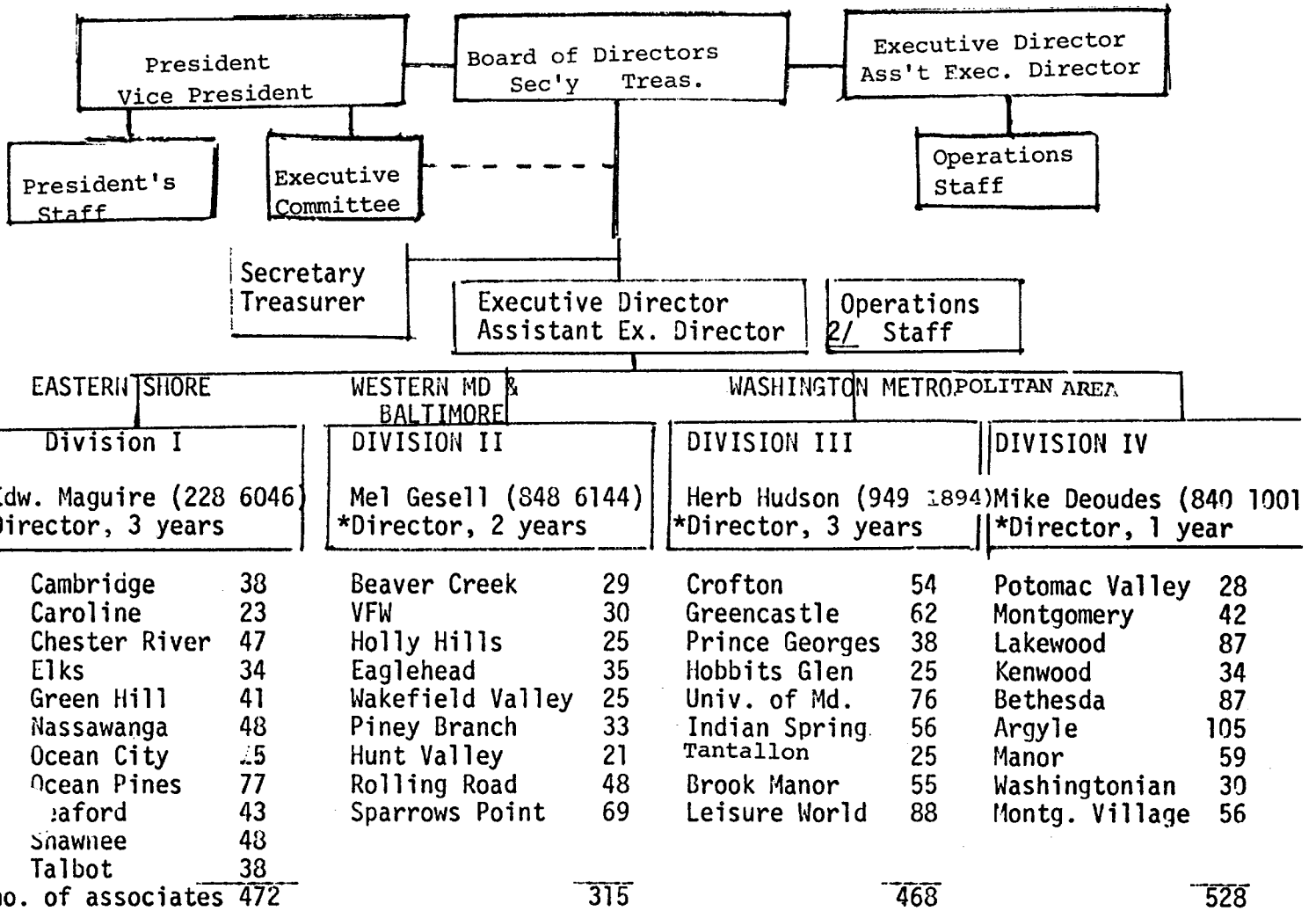
Lou Pikus shot his age (73) during Cambridge's mixer at his club. Lou has been our club rep ever since Shawnee joined MISGA.

Bill McFerrer at 77 shot two 75's at home (U. of Md.) during the week of August 5.

W. Marks Jaillite of Greencastle aced the long 15th with a 5-wood in Aug. when he was 74 and the short 12th in September when he was 75!

AND Red Green, our club rep at Ocean City is especially proud of his "bride" this fall. She was a member of Ocean City's team that won all their team's gross matches in the Delmarva area. [This item may open a floodgate of distaff items but send the notable ones in and I'll promise not to burden you with the info of whose "bride" won which club championship.]

MISGA ORGANIZATION CHART FOR OCT. 1, 1981 TO SEPT. 30, 1982



*Terms were determined by lot.

1/ President's Staff

President: Wm Woolston, Hunt Valley, 666 2505
 Policy and Planning: Gil Williams, Chairman, Univ. of Md., 935 3116 (College Park)
 Membership: John Edwards, Piney Branch, Chairman, 486 2615 (Pikesville)
 Audit: Edward Abel, Chairman, Indian Spring, 942 6034

2/ Executive Director's Staff

Executive Director: Al Hagen, Lakewood, 593 0384 (or in FLA 813 482 4466)
 Assistant Executive Director: Al Sondheimer, Argyle, 652 7838
 Tournaments: Mike Deoudes, Chairman, Potomac Valley, 840 1001
 Associates Program: Sam Hastings, Argyle, Chairman 598 6171
 Communications: Lee Shimberg, Chairman, Greencastle 890 8845
 John Wheeler, Greencastle
 Herb Hudson, Indian Spring
 Fiscal Advisor: Sid Rapoport, Hobbits Glen, 997 5835

NOTE: During my absence this winter Al Sondheimer will be your contact for Operations matters. My address until April 1, 1982 is:

5595 Bolla Ct. S.W.
 Fort Myers, FL 33907

CLUB REPS FOR 1981-82

MIS GA CLUB REPS 1981-82

Division 1 - Ed Maquire, Director

CAMBRIDGE - Charles Staley Cassons Neck RD 3 Cambridge 21613 228-3943
CAROLINE - Sam Bebee 313 Buena Vista Ave. Federalburg 21632 754-8609
CHESTER RIVER - Bob Fleetwood Rt 4 Box 363 Chestertown 21620 778-0666
ELKS - Bill Long 129 Holland Ave. Salisbury 21801 749-9136
GREEN HILL - Norm Gatterdam 9 Devonshire Dr. Salisbury 21801 546-4753
NASSAWANGO - Ralph French Pt. 1 Box 220 Princess Anne 21853 651-38 B
OCEAN CITY - Bill Day Rt 2 Box 256 Berlin 21811 641-C598
OCEAN PINES - Syd Taylor 4238 Ocean Pines Berlin 21811 641-8583
SEAFORD - Stuart Sargent 607 Phillips Seaford DEL 19973 (302) 629-4141
SHAWNEE - Lou Pikus 23 Elizabeth Milford, DEL 19963 (302) 422-7441
TALBOT - Pete Sivess RD 1 Box 124 E. Saint Michaels 21663 745-5660

Division 2 - Mel Gesell, Director

BEAVER CREEK -
EAGLEHAD - Bill Dorrell Rt. 6 Box 175 Frederick 21701 663-9007
HOLLY HILLS - Hal Renegar 1601 Rock Creek Dr. Frederick 21701
HUNT VALLEY - Bill Woolston 13711 Summer Hill Dr. Phoenix 21131 666-2505
PINEY BRANCH - Elmer Bright 224 Rickwood Rd. Timonium 21093 252-2197
ROLLING ROAD - John MacDonald 215 Rolling Brook Way Baltimore 21228
SPARROWS PT. - Frank Bucharewicz 3802 Pratt Baltimore 21224 342-0290
VFW - Jim McClaren 710 Midway Dr. Frederick 21701 663-4824
WAKEFIELD VAL. - Gerald Davis 810 Fairfield Ave. Westminster 21157 848-4287

Division 3 - Herb Hudson, Director

BROOKE MANOR - Tony Grande 11318 Mitscher Kensington 20795 946-0322
CROFTON - Harry Bryan 1732 Albemarle Dr. Crofton, 21114 261-0905
GREENCASTLE - Jack Nichols 15119 Liberty Grove Rd. Burtonsville 20730 421-9048
HOBBITTS GLEN - Frank Koby P.O. Box 129 Clarksville 21029 286-2112
INDIAN SPRING - Herb Hudson 4005 Rickover Rd. S.S. 20902 949-1894
LEISURE WORLD - Joe Weber 15311 Pine Orchard S.S. 20906 598-4249
MARYLAND - Sam Wolk 1416 Crestridge Dr. S.S. 20910 585-8168
PRINCE GEORGES - Dick Cain 7504 Sweetbriar Dr. College Park 20740 474-4679
TANTALLON - Rex Nelson 7024 Quander, VA 22307 (703) 768-9040

Division 4 - Mike Deodes, Director

ARGYLE - Sam Hastings 15416 Tierra Dr. S.S. 20906 598-6171
BETHESDA - Wm, Thornton 5816 Greentree Rd. Bethesda 20034 530-2789
KENWOOD - Pat Boyle 3929 N. 36th Arlington, VA 22207 (703) 527-458
LAKWOOD - Al Strachocki 13 Eton Overlook Rockville 20850 424-4958
MANOR - Ashby W. Smith 14519 Faraday Dr. Rockville 20853 871-6311
MONTGOMERY - Doug Moats 508 Kerwin Rd. S.S. 20901 593-2567
MONTGOMERY V - Duane Swindle 19516 Tiber Ct. Gaithersburg 20760 869-5612
POTOMAC VAL - Mike Deodes 9701 Fields Rd. Gaithersburg 29706 848-1001
WASHINGTONIAN - Tom Priolo 4921 Chevy Chase Blvd Chevy Chase 20015 654-0398

SCHEDULE OF BOARD MEETING DATES IN 1982

DATE	LOCATION
5/11	Arcoyle
7/29	Hunt Valley
9/14	Lakewood
10/4	Caroline -- Meeting with Club Reps
10/5	Caroline -- Board Meeting

IN MEMORIAM

MISGA notes with sorrow that the following Associates died during the past year:

George Fisher, Beaver Creek
John McManus, Bethesda
Frank McNamara, Ocean Pines
Bob Raquains, Arcoyle
Ray Smythe, Ocean Pines
Al Steele, Ocean Pines
Jack Watson, Ocean Pines

MISAGram DISTRIBUTION POLICY

MISGA prints enough MISAGrams to provide each Associate with a copy. Because some clubs have advised us that not all of their Associates are interested in receiving a copy, we send enough to reach 75% of the club's membership. These copies are mailed directly to the club rep. For example if your club has 80 Associates, your club rep received about 60 copies of the October MISAGram. Distribution to you thereafter is the responsibility of the club rep.

If 75% isn't the optimum figure for your club let us know and we'll adjust the figure upwards or downwards.

Lee Shimberg, Editor

HIGHLIGHTS OF AUDITOR'S REPORT -- FINANCIAL OPERATIONS 1980-81

Our auditor, Ed Binder (Columbia), has reported that he has examined MISGA's books and has been able to trace and verify all receipts and disbursements through the fiscal year ending Sept. 30, 1981 except for the Eastern Shore Spring Fling which account remained open at the end of the fiscal year.

We started the year with \$5466.15 in the till; we spent 4183.38 and we received 6291.12. After doing the necessary adding and subtracting, you'll find this left us with 7573.89.

A detailed report may be obtained on request to our Treasurer.

REPORT FROM FOXFIRE

On a sunny Sunday last November, about 60 of us (wives included) arrived at Foxfire, a golfing enclave near Pinehurst N.C. All we had to do was concentrate on keeping the weather good, getting off the tee, and leaving only uphill putts. We succeeded in the first two objectives leaving on the fourth day of golf with the temperature in the mid-70s. The format, except for Thursday (about which more later) will be clear from the list of first-place winners:

MONDAY - Regular Scrambler
Ed Abel
Orville Wright
Dave Wallace
Herb Meyer

TUESDAY - Two-Man Team Better Ball
Bud Newman-Lee Shimberg

WEDNESDAY - Four-Man Team
Art Browne
Jim Miller
Bruce Keifer
Dave Wallace

THURSDAY - Sophisticated Scrambler
with the ladies
Ed Abel
Mary Gold
Esther Meyer
Larry King

The version of sophisticated scrambler that we played is one in which every player must have a tee shot used not less than Four times. This called for wizardry or at least advanced strategy.

Although the ladies-only results were not available, it can be reliably reported that Eloise MacPherson went to the well on each of the four days.

On the last evening, at our Awards Dinner, certificates of appreciation were awarded to Frank Buddle for his unselfish contribution to MISGA as a Director for many years, and to Naomi Henline for organizing all ladies' activities at Foxfire.

THE CRYING TOWEL

2. Bees

A couple of years ago, at one of our MISGA clubs, during a Pro-Lady Tournament, a pro hit a ball into a green-guarding sand trap that was pretty full of bees --most of them angry. After surveying the situation, the pro decided that there was no part of the bunker safe from bees, declared his ball unplayable (probably under the temporary immovable obstruction rule), dropped the ball back of the bunker in the correct line, assessed himself one stroke, and resumed play.

When this gambit was challenged, the home pro looked at the bees (it was at the 18th hole so it was easy enough to check), decided that he wouldn't go into the sand trap but ruled that the playing pro violated the unplayable lie rule anyway and assessed him a two-stroke penalty. What the playing pro should have done was to move his ball from the bee-laden trap (right side of green) to a bee-free trap (left side of green) no closer to the hole and play out without penalty. Lot's of gnashing teeth about this one!

NOTE: The Crying Towel is published for the benefit of MISGA Associates primarily to inform but also to entertain. If you have an unusual Crying Towel story, send it to the editor and it will be published with or without attribution.

MAJOR MISGA EVENTS IN 1982

Start the year right by reserving a calendar for the exclusive use of your golf dates. You'll have your mixers, invitational dates from other clubs, and Special Events and Tournaments. Except for the Fall Festival, which will be set after we receive your opinions via the survey, the following dates are set:

Club Reps Annual Mtg.	4/20	Pr. Geo.
E. Shore Spring Fling	5/5-5/6	
	at Nassawanga/Ocean City	
Two Man Scratch	6/24	Sparrows Point
Championships:		
Qualifying:	Holly Hills	9/8
	U. of Md.	9/8
	Caroline	9/7
Championship	Talbot	9/24
Fall Festival	November	

NOTE: Some dates to be confirmed by host clubs.

YOU SAY YOU'RE NOT SATISFIED!

YOU SAY YOU'RE NOT SATISFIED! -- I'LL TELL YOU WHAT WE'RE GONNA DO

---byroving reporte Lee Shimberg

I went to Foxfire and announced my intention to do so as soon as the details became available. I rushed my reservation to Al Hagen on day number one because I was sure that there would be a great rush to claim the choicest accomodations. I felt this way because our move to Foxfire was prompted, in part,, by the suggestions of many Associates that we 1) move to a closer location (than Myrtle Beach) and 2)go for a shorter stay. In moving to Foxfire, we did both while holding the cost to a comparable figure. When the rush I anticipated did not occur,I wondered why, particularly since I'm the one who told you what a good deal the Spring Fling was. (And it was!) Beyond wondering, I asked at recent MISGA events (two mixers, the Scratch Tournament, the qualifying round at Tantallon, and the Fall Championship at Lakewood) if those I was playing/eating with were planning to go. None said that they planned to although a few expressed the hope that they'd be able to go. A few said that they couldn't go regardless of location or cost because of home commitments. Although no one cited the cost, it is possible that some objected to the cost without saying so. The most frequent objection was that Foxfire was too long a trip for the amount of golf offered.

This leads me to believe that many of our Associates don't want to travel more than about one hour per day-of-golf. Translated that means that if we get a package of three days of golf (two nights lodging) or four days (three nights lodging), we should find locations within three or four hours driving time respectively.

We can do this! One possibility, for example is Williamsburg --now less than three hours driving time from D.C.-- which has two beautiful championship golf courses (Kingsmill and The Golden Horseshoe) with plenty of sightseeing including the glass factory and Busch Gardens for the nongolfing ladies. Even if no package like this currently exists, we could set one up with one of the hotel chains.

SPECIAL EVENTS SURVEY ON OTHER SIDE

(Fill out, detach, and give to your club rep.)

YOU SAY YOU'RE NOT SATISFIED!

And this is only one possibility. We can also go West or North and stay within a three hour's drive and get elegant accomodations and two beautiful golf courses. North would be Pennsylvania, South, Virginia, and West would be West Virginia. What we would like is to find a location and package that most of our 2000 Associates would like to attend; two or three percent participation is almost nonresponsive.

So I'll tell you what we're gonna do. We're asking you for your druthers. Here's an easy-to-fill-out survey form for you. You can reply to it and it won't even cost you a stamp. Just check off your preferences, clip it, and give it to your club rep. He'll get it to us.

This organization exists to meet as many golfing desires of its Associates as it can; it needs the assistance of individual Associates --you-- to determine what these needs are. You can contribute to this goal by completing and forwarding the survey form. In so doing you will be personally helping to provide an improved golfing program for all MISGA Associates.

SPECIAL EVENTS SURVEY

1. Have you participated in one or more of the following MISGA Special Events?
Spring Outing - Myrtle Beach Yes ___ No ___; Spring Outing Calloway Gardens Yes ___ No ___
Fall Outing Foxfire Yes ___ No ___.
 2. If your answer is Yes to any of the above, what improvements can you suggest?

 3. If your answer is No, please indicate why. Didn't know about them ___; Too expensive ___;
Too far away ___; Too long ___; Other (explain) _____.
 4. Too expensive (as you have it)
 5. Too far (as you have it)
 6. Too long (as you have it)
 7. Would you be interested in participating in a MISGA-sponsored event during the regular golf season in our area? (April thru October) Yes ___ No ___.
 8. If yes, suggest a specific location: (Suggestions The Greenbrier; Tides Lodge, Irvington Va.; Hershey Hotel and Country Club; -Shannon Green, Fredicksburg, Va. _____)
-