



# MISGAGRAM

Volume 151 – June 2022

[www.misga.org](http://www.misga.org)

## President's Message



Time really flies by when golf season is in full force! I try playing three or four times per week, but my back is arguing with me over that. There are so many mixers to choose from if your Club Reps did a big schedule. I am finding that the Crofton CC players are continuing to show they are among the worst traveling clubs in MISGA! We might send 4 – 5 players out of the 103 members of Crofton Seniors/MISGA. I have scheduled 6 – 8 clubs for each MISGA Mixer at Crofton to get between 70 and 80 players per Mixer. I am not sure if it is the price of gas

coupled with the Mixer price, compounded by the slow play experienced in Mixers, that is keeping the attendance lower than in past years.

On the subject of slow play, we tried a different format for our June 8<sup>th</sup> Mixer at Crofton. We used the Stableford with a quota (36 minus playing handicap equals quota). Since a player could not hurt or help a team once they got to a gross double-bogey, players were encouraged to pick up at that point and record their “Most Likely Score” in accordance with USGA Rule 3.3. While most players played their ball until they holed out, higher handicap players found if they picked up at double-bogey gross, it picked up the speed of play. Some of the purists among us didn’t like that idea, but the last group came in an hour faster than the last group a month earlier using the traditional best 2 of 4 method!

*(Continued on p 3)*

Maryland  
Interclub  
Seniors Golf  
Association

**President**

Chuck Woods

**Vice President**

Tom Ciandella

**Secretary**

John Babyak

**Treasurer**

Gary Manion

The MISGAGRAM is the official newsletter of the organization published on the web site four times each year. The mission of the MISGAGRAM is to provide information of common interest to association members. The MISGAGRAM can be read or downloaded at:

[www.misga.org](http://www.misga.org).

The publication months for the MISGAGRAM are:

March

June

September

December

Noteworthy events and announcements for away activities, and articles of general interest may be submitted to the editor at any time for publishing. The closing dates for publication are:

**10 March** (March)

**10 June** (June)

**20 Sept.** (September)

**20 Dec.** (December)

All materials should be sent via e-mail to:

[tgnome1@gmail.com](mailto:tgnome1@gmail.com)

Bob Hodges

MISGAGRAM Editor

## The Lighter Side



**“I know how you feel, sir, but we can’t pay disability benefits for a 25 handicap.”**

What’s the difference between a bad golfer and a bad sky diver?

*See p. 5 for answer*

## President's Message, *continued*

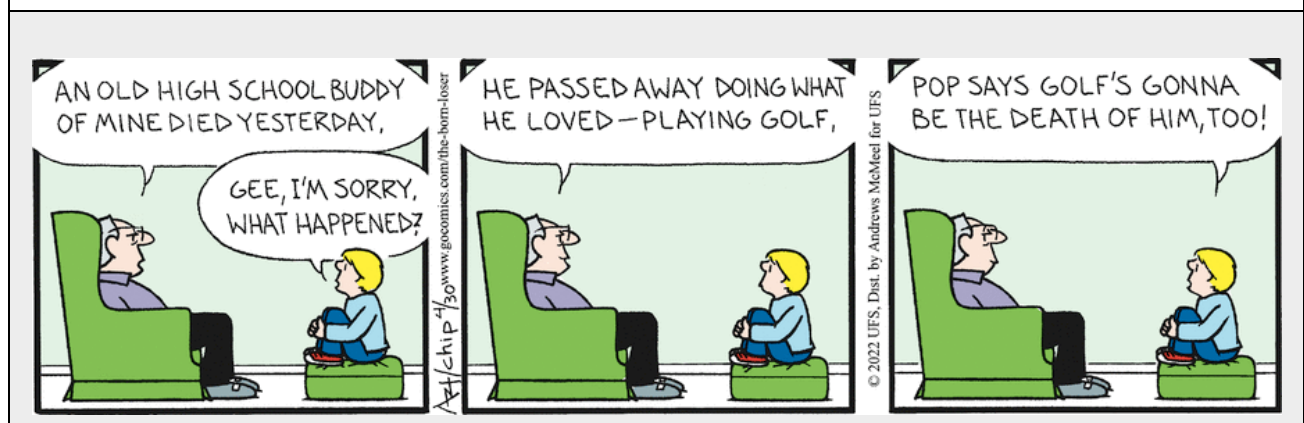
I am happy to report that the emphasis on reporting Associate Rosters and collecting Associate Dues has made a big difference this year. While several clubs missed the June 1 deadline, I believe by the time you read this, all clubs will have been accounted for. More lessons were learned this year and we will endeavor to fix those issues in the process for next year. Some clubs needed a MISGA invoice to trigger a payment, and some needed a MISGA W-9. Processes to provide these are now in place.

We probably need to set reasonable expectations for having all of this information and checks in to the Divisions by June 1 of each year and forwarding all of that information to the MISGA Associates Chair and Treasurer.

Early returns indicate that we will have 36 clubs with a total of 1,721 Associates for 2022 versus 37 clubs and 1,886 associates last year. We lost two clubs this year, Fountain Head, for lack of a Club Rep and Manor, as they are celebrating a big anniversary and did not want to participate in MISGA Mixers in 2022. Their 116 associates account for much of the reduction of 168 Associates from 2021. We should note that Glade Valley has returned to MISGA in 2022 with 29 Associates.

Be safe and stay healthy!

Chuck Woods, MISGA President





## 2022 MISGA Championship Events

	Host Club	Date	Rain Date	Cost
Past Presidents (ABCD)	Crofton CC	Mon, Sep 26	Mon, Oct 31	\$100
2-Player Team	Montgomery CC	Mon, Aug 22	Tues, Aug 30	\$100

*See your MISGA Club Rep to Register*

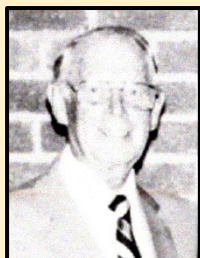




## Tidbits of MISGA History

### MISGA PRESIDENTS

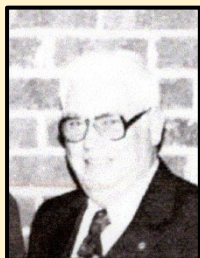
Since its establishment in 1976, MISGA has had many fine gentlemen serve as the MISGA President. Here are the first four.



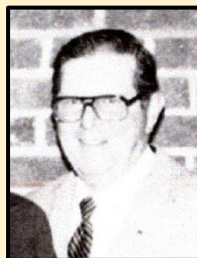
Al Hagen (*Lakewood*) – 1976-1980



Ed Schmidt (*Talbot*) – 1981



Bill Woolston (*Hunt Valley*) – 1982



Herb Hudson (*Indian Spring*) – 1983 & 1984

*Stim*Lloyd Stimson

MISGA History Chair

***Riddle Answer: A bad golfer goes 'Whack, Dang.' and a bad sky diver goes 'Dang, Whack'.***

## **Flings and Things (Or... Frolics and Stuff)**

Frolicking looks like it isn't much of a thing this year.

### ***Winter Fling 2022***

*This one went off as planned.*

### ***Spring Fling 2022***

*TBD – Not likely this year*

### ***Summer Frolic 2022***

*TBD – Not likely this year*

### ***Fall Frolic 2022***

*TBD – Not likely this year*

